

We're here to help.

Our Entry Level Recruiting Team is dedicated to supporting the early stages of our lawyers' careers. From helping candidates navigate the hiring process, to welcoming new lawyers on their first day, to building opportunities for junior lawyers to develop key foundational skills and beyond—we're here to support your success throughout your journey with Ballard Spahr.

We're excited to meet you!



Lisa K. Feden (she/her/hers)

Director of Entry Level Recruiting and Integration

Email Lisa: fedenl@ballardspahr.com

Lisa joined Ballard as a recruiter in 2014. Prior to joining the firm, Lisa recruited undergraduate students to attend Drexel University's LeBow College of Business while simultaneously completing her MBA in Marketing. Outside of recruiting, Lisa enjoys focusing on wellness through fitness, cooking, traveling, and spending time with her dog Georgia.

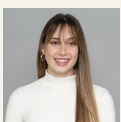


Lori Miceli (she/her/hers)

Manager of Entry Level Recruiting and Development

Email Lori: micelil@ballardspahr.com

Lori joined Ballard's Entry Level Recruiting Team in 2022. In addition to recruiting, Lori leads the firm's early career training and professional development efforts to support the success of our junior lawyers. Prior to joining the firm, Lori spent over a decade in higher education at Drexel University's LeBow College of Business. She brings experience in academic and curriculum planning, developmental coaching, and student recruiting to her current role. Outside of work, Lori enjoys spending time with her family—which includes two young boys—hiking, music, and gardening.



Hannah G. Eshleman (she/her/hers)

Recruiting Coordinator

Email Hannah: eshlemanh@ballardspahr.com

Hannah started her career in recruiting at Ballard in 2022. She has a passion for helping people, and she is excited to support both the entry level recruiting and early career professional development efforts of the team. Hannah is not new to the legal industry, as she worked in legal billing and case management prior to joining the firm. Hannah enjoys spending time with her family, exercising, baking, and listening to podcasts.

For questions about summer associate or entry level associate opportunities, please reach out to the appropriate recruiting contact below:

Delaware, New Jersey, New York, Philadelphia, Washington D.C.

Lisa Feden, *Director of Entry Level Recruiting and Integration*
fedeni@ballardspahr.com | 215.864.8339

Atlanta, Boulder, Denver, Los Angeles, Phoenix, Salt Lake City

Lori Miceli, *Manager of Entry Level Recruiting and Development*
miceli@ballardspahr.com | 215.861.7423

Baltimore, Las Vegas, Minneapolis, Sioux Falls, General Recruiting Inquiries

Hannah Eshleman, *Recruiting Coordinator*
eshlemanh@ballardspahr.com | 215.861.7308